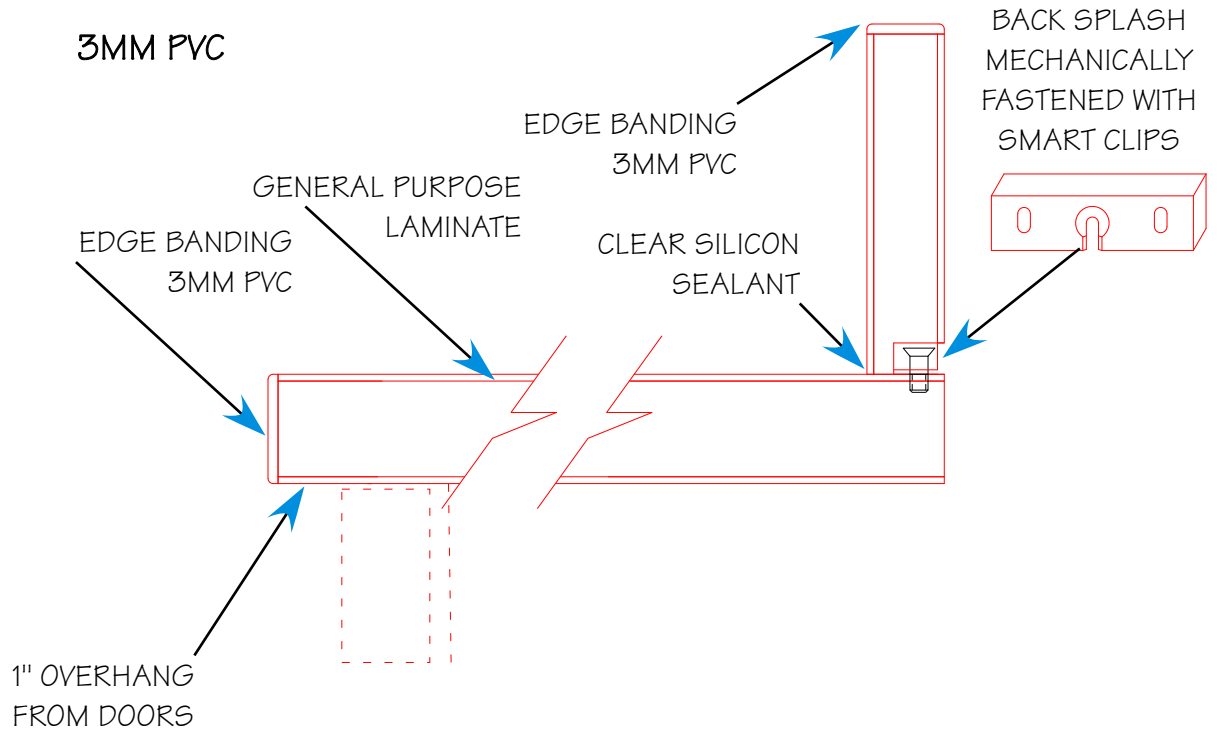


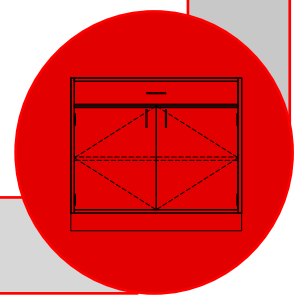
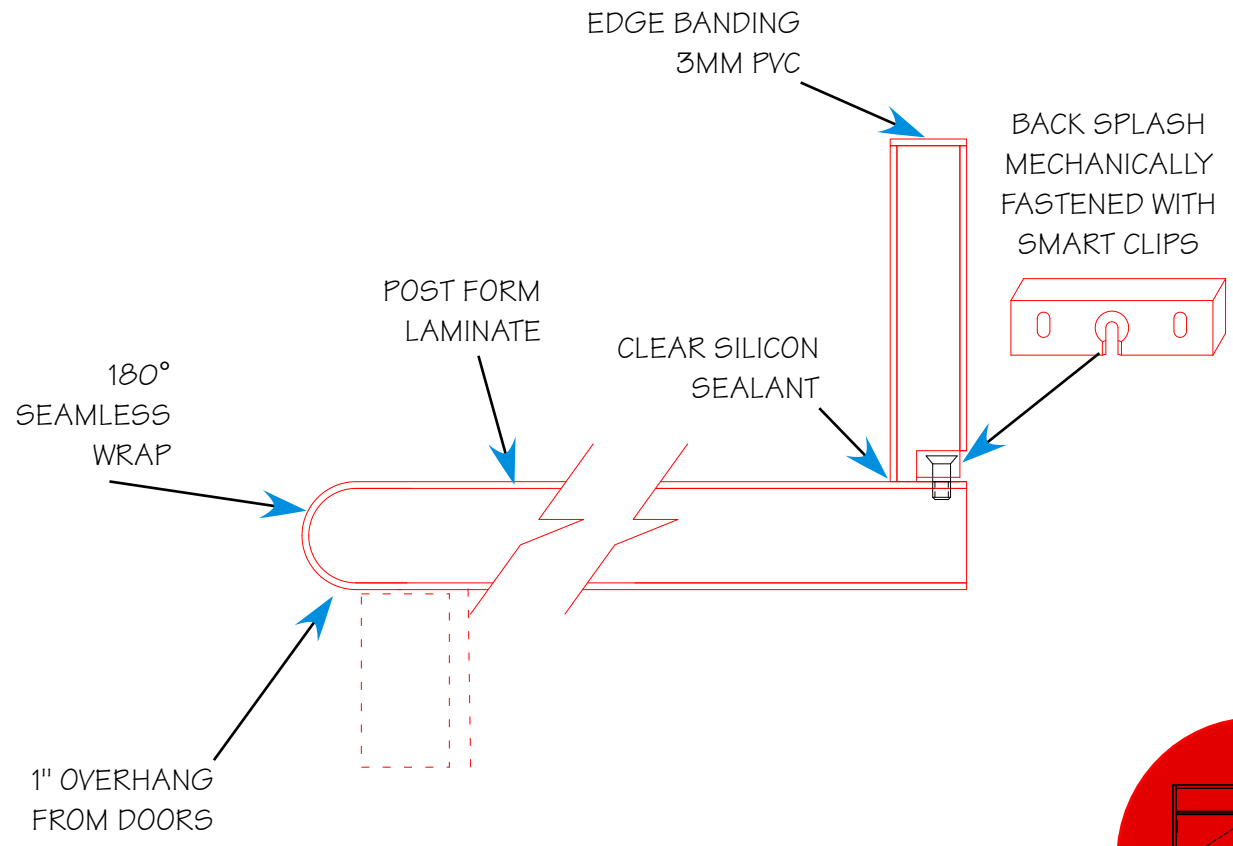
MICA-TEC



**PRE MANUFACTURED
EDUCATIONAL
CASEWORK
CATALOG**



180° BULLNOSE EDGE



Epoxy Resin

Material Description:

A modified epoxy resin cast in permanent molds and oven cured to result in a material with superior corrosion resistance. Tops are available in 3/4" and 1" thick in black, grey or white.

Edge Treatment:

Finished solid edge.

Recommended Use:

All areas, especially chemical, research and biology labs.
Areas requiring chemical and heat resistance.



Plastic Laminate

Material Description:

High pressure plastic laminated to a panel product wood core.
Available in a full range of color and pattern options as well as a chemical resistant finish.
1 1/8" solid core standard construction.

Edge Treatment:

Decorative self-edge, impact resistant "T"-mold, 3MM PVC, post formed or premium wood edge finish.

Recommended Use:

General purpose areas requiring limited heat and chemical resistance.



Solid Maple

Material Description:

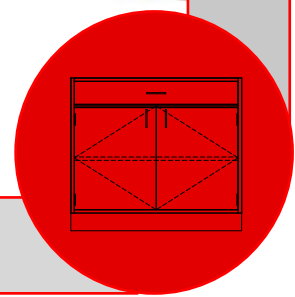
Solid maple wood strips glued together under pressure and finished with a transparent chemical resistant material. The result creates a top with the grain and color variances normally associated with a natural product such as wood. Available 1 1/2" thick.

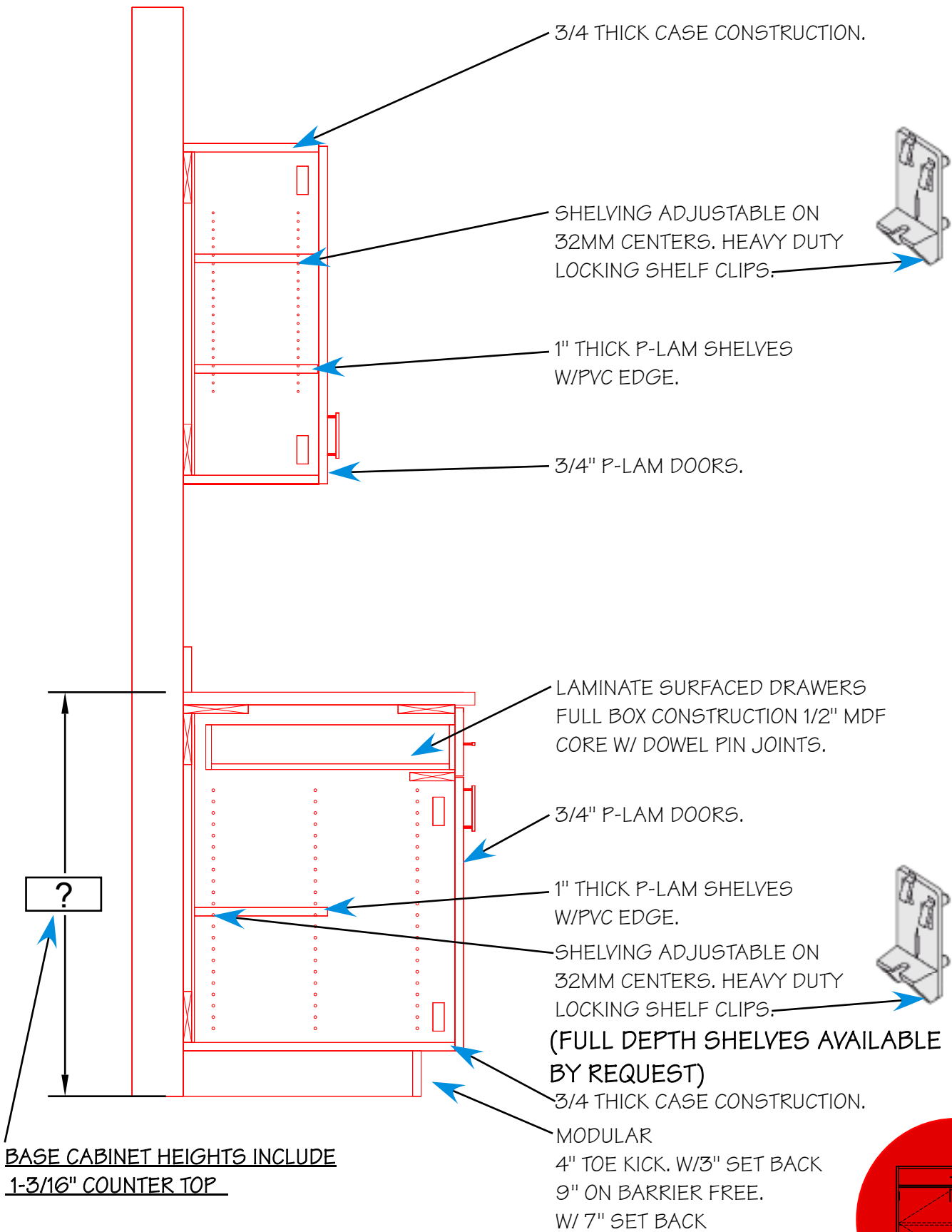
Edge Treatment:

Solid finished edge.

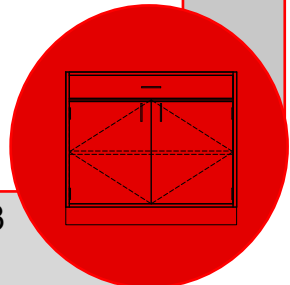
Recommended Use:

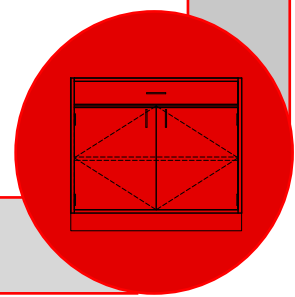
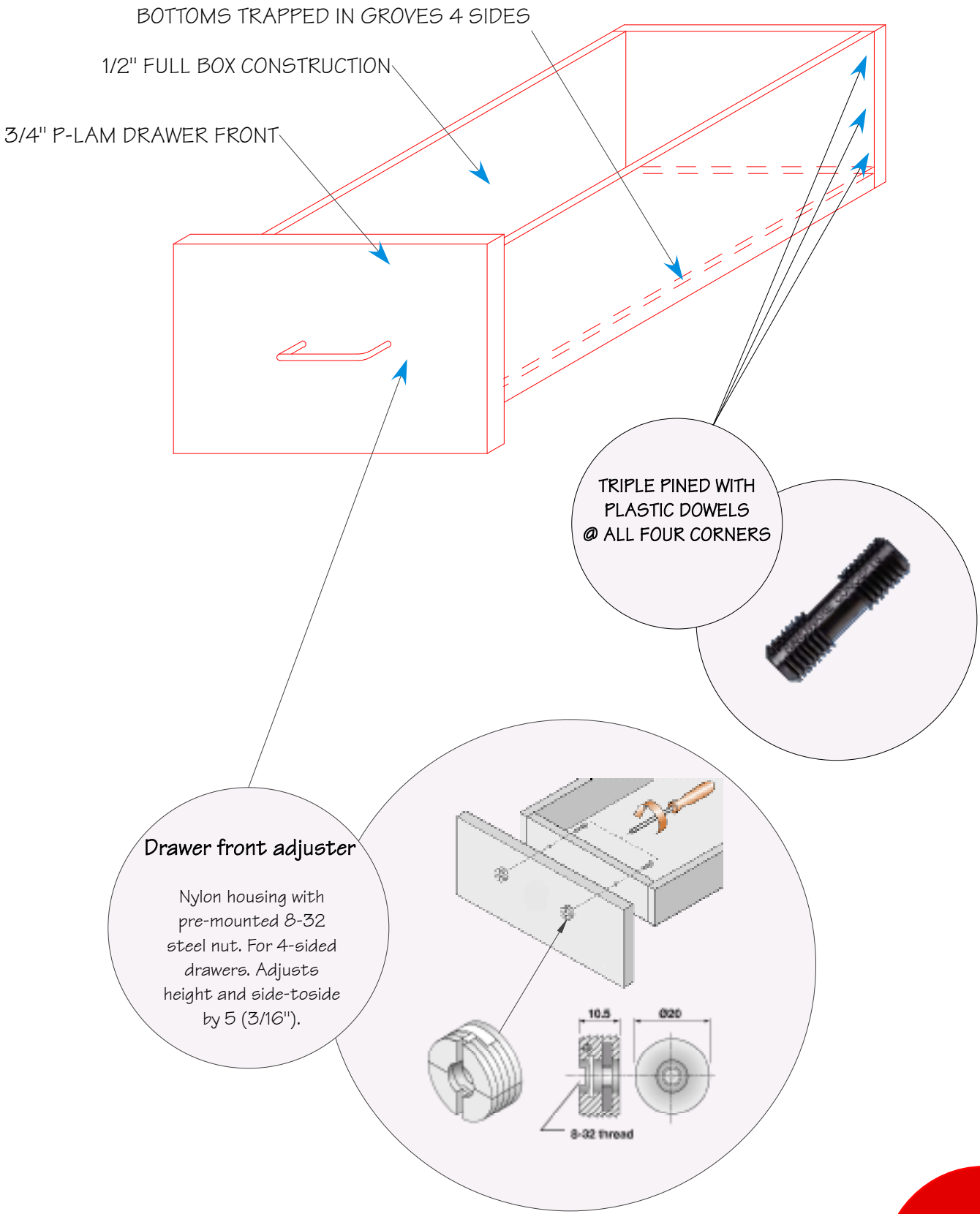
Traditional surface used in testing labs and industrial facilities.





BASE CABINET HEIGHTS INCLUDE
1-3/16" COUNTER TOP

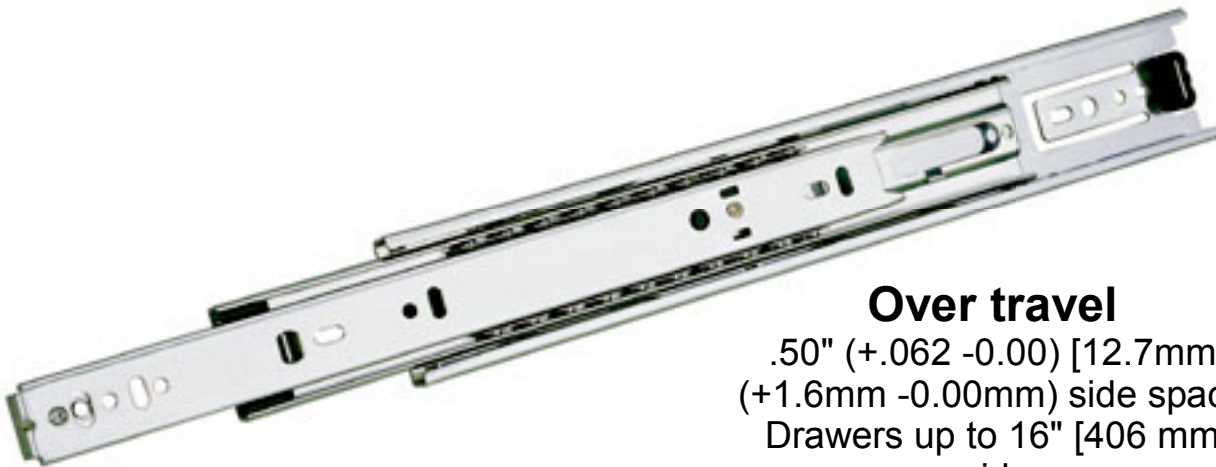






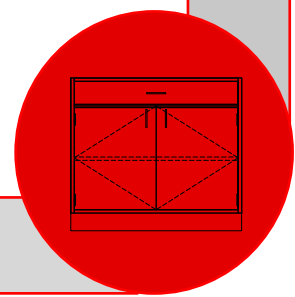
Full extension

.50" [12.7 mm] side space
Drawers up to 16" [406 mm]
wide
Rail mount/disconnect
Steel ball bearings
Even lengths 8"-22"
[203-559 mm]
Clear zinc finish



Over travel

.50" (+.062 -0.00) [12.7mm]
(+1.6mm -0.00mm) side space
Drawers up to 16" [406 mm]
wide
Lever disconnect
Ball bearings
Even lengths 12"-28"
[305-711 mm]
Clear zinc finish





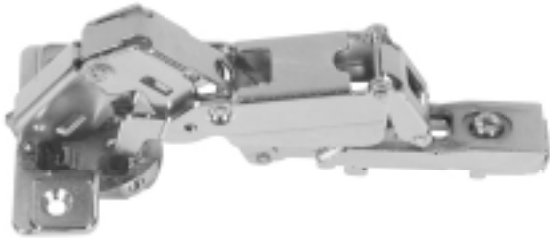
2-3/4" Five Knuckle Hinge

- Designed for 32mm Hole system
 - Hospital tips WIC Approved
 - Teflon coated pin
 - ANSI/BHMA A156.9 Grade 1
 - Radius Knuckles
- 32mm Hole Spacing • 45mm Door Wing

270° INSTITUTIONAL BARREL HINGE



- ANSI/BHMA A156.9-2001 Grade 1
 - Full overlay opens 270°
- 4mm (5/32") reveal on a 19mm (3/4") end panel



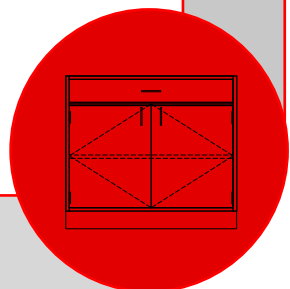
170° Opening Hinge

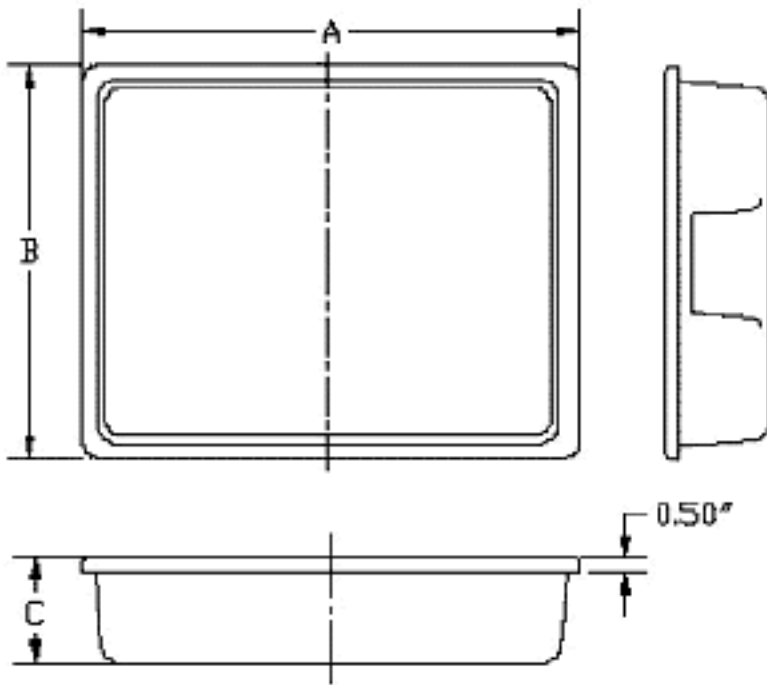
- Self Closing
- Nickel Plated Steel



120° Opening Hinge

- Opening 120° with (k) max 4mm and (t) max 18mm
 - Self Closing
 - Nickel Plated Steel



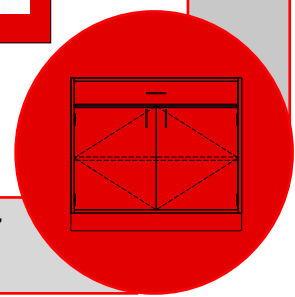


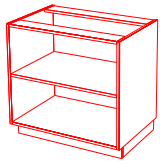
MODEL	A'	B'	C'
T100	19	9	3.5
T100-35	19	9	4.375
T101	16.625	13.125	3.5
T102	19	13.75	4.375
T103	18	11.5	4.25
T105	19	13.75	3.5
T105-3	19	13.75	3
T106	16	11.75	4.375
T107	20	8.5	4.5
T109	20	11.5	4.125
T110	19	10.5	3.5

Standard and Custom Colors Available

Red Yellow Green Blue Tan Ivory White Clear

• Colors shown above are the best approximation of actual plastic colors printing methods will allow. Plastic color chips will be sent upon request.

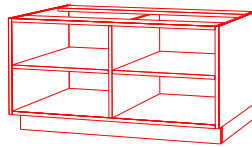




STORAGE

MODEL	W	H	D
BOS	12	30	25
	15	33	30
	18	36	34
	21	36	20
	24	42	24
	27		29

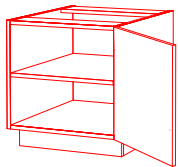
ADJUSTABLE SHELF



STORAGE

MODEL	W	H	D
BOS	39	25	13
	42	30	14
	45	34	18
	48	36	20
		42	24
			29

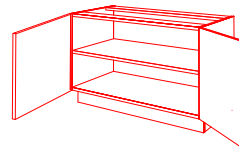
CENTER DIVIDER
2 ADJUSTABLE SHELVES



STORAGE

MODEL	W	H	D
BS	12	25	13
	15	30	14
	18	34	18
	21	36	20
	24	42	24
			29

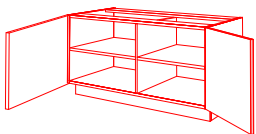
RIGHT OF LEFT HAND DOOR
ADJUSTABLE SHELF



STORAGE

MODEL	W	H	D
BS	27	42	25
	30	45	30
	33	48	34
	36	36	20
	39	42	24
			29

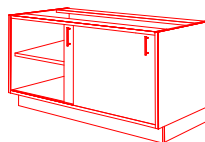
DOORS
ADJUSTABLE SHELF



STORAGE

MODEL	W	H	D
BS	27	42	25
	30	45	30
	33	48	34
	36	36	20
	39	42	24
			29

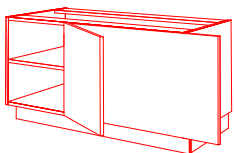
DOORS , CENTER DIVIDER
2 ADJUSTABLE SHELVES



STORAGE

MODEL	W	H	D
BSSD	30	42	25
	33	45	30
	36	48	34
	39	36	20
		42	24
			29

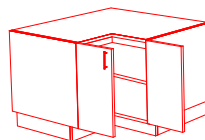
SLIDING DOORS
ADJUSTABLE SHELF



BLIND CORNER

MODEL	W	H	D
BSBC	48	25	18
		30	20
		34	24
		36	
		42	

RIGHT OR LEFT HAND
ADJUSTABLE SHELF
BLIND CORNER

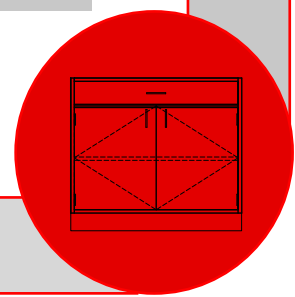


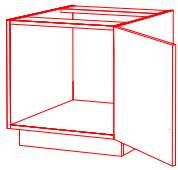
"L" SHAPED CORNER

MODEL	W	H	D
BSCC	36	25	24
		30	
		34	
		36	
		42	

DOORS
FIXED SHELF
"L" SHAPED CORNER

BASE CABINET HEIGHTS INCLUDE 1-3/16" COUNTER TOP

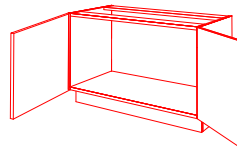




SINK BASE*

MODEL	W	H	D
BK	18	25	20
*	21	30	24
	24	34	29
		36	
		42	

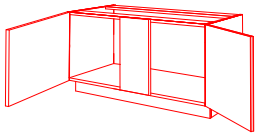
RIGHT OF LEFT HAND DOOR



SINK BASE*

MODEL	W	H	D
BK	24	39	25
*	27	42	30
	30	45	34
	33	48	36
	36	54	42

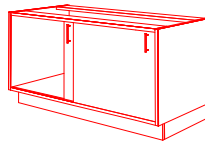
DOORS



SINK BASE*

MODEL	W	H	D
BK	60	25	20
*	72	30	24
		34	29
		36	
		42	

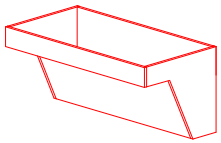
DOORS



SINK BASE*

MODEL	W	H	D
BKSD	30	42	25
*	33	45	30
	36	48	34
	39	36	
		42	

SLIDING DOORS



HANGING SINK BASE

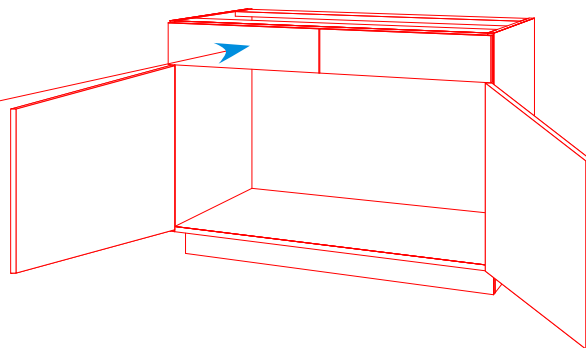
MODEL	W	H	D
BKH	30	42	26
		33	45
		36	48
		39	

REMOVABLE KNEE PANEL

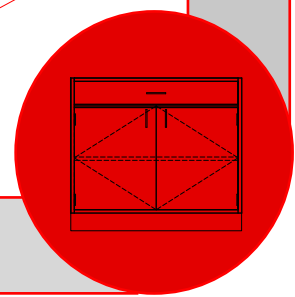
CANT FIND IT HERE
CALL
(586)-758-4404

ALL SINK BASES
AVAILABLE WITH
OR WITHOUT
FALSE FRONTS

*BKFF



BASE CABINET HEIGHTS INCLUDE 1-3/16" COUNTER TOP

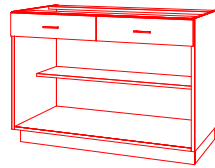




BASE CABINET

MODEL	W	H	D
B0	12	27	30
	15	30	34
	18	33	36
	21	36	42
	24		29

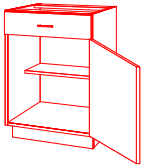
ADJUSTABLE SHELF



BASE CABINET

MODEL	W	H	D
B0	39	25	4
	42	30	18
	45	34	20
	48	36	24
		42	29

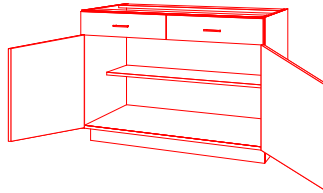
ADJUSTABLE SHELF



BASE CABINET

MODEL	W	H	D
B	12	27	30
	15	30	34
	18	33	36
	21	36	42
	24		29

RIGHT OF LEFT HAND DOOR
ADJUSTABLE SHELF



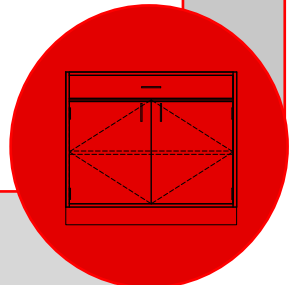
BASE CABINET

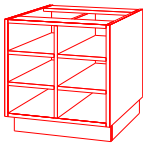
MODEL	W	H	D
BS	39	30	14
	42	34	18
	45	36	20
	48	42	24
			29

DOORS
ADJUSTABLE SHELF

CANT FIND IT HERE
CALL
(586)-758-4404

BASE CABINET HEIGHTS INCLUDE 1-3/16" COUNTER TOP

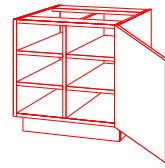




CUBICLE

MODEL	W	H	D
BC	21	25	13
	24	30	14
		34	18
		36	20
		42	24
			29

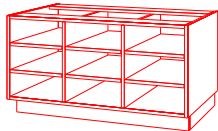
25"-30" H
4 ADJUSTABLE SHELVES
6 COMPARTMENTS
34"-36"-42" H
6 ADJUSTABLE SHELVES
8 COMPARTMENTS



CUBICLE

MODEL	W	H	D
BC	21	25	13
	24	30	14
		34	18
		36	20
		42	24
			29

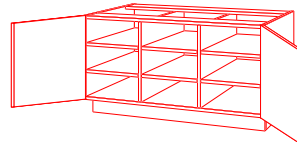
RIGHT OR LEFT HAND DOOR
25"-30" H
4 ADJUSTABLE SHELVES
6 COMPARTMENTS
34"-36"-42" H
6 ADJUSTABLE SHELVES
8 COMPARTMENTS



CUBICLE

MODEL	W	H	D
BC	27	42	25
	30	45	30
	33	48	34
	36	36	20
	39	42	24
			29

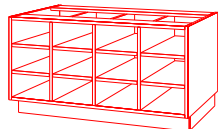
25"-30" H
4 ADJUSTABLE SHELVES
6 COMPARTMENTS
34"-36"-42" H
9 ADJUSTABLE SHELVES
12 COMPARTMENTS



CUBICLE

MODEL	W	H	D
BC	27	42	25
	30	45	30
	33	48	34
	36	36	20
	39	42	24
			29

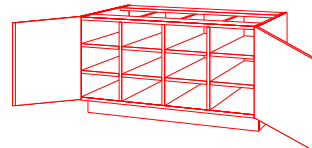
DOORS
25"-30" H
4 ADJUSTABLE SHELVES
6 COMPARTMENTS
34"-36"-42" H
9 ADJUSTABLE SHELVES
12 COMPARTMENTS



CUBICLE

MODEL	W	H	D
BC	36	25	13
	39	30	14
	42	34	18
	45	36	20
	48	42	24
			29

25"-30" H
4 ADJUSTABLE SHELVES
6 COMPARTMENTS
34"-36"-42" H
9 ADJUSTABLE SHELVES
12 COMPARTMENTS

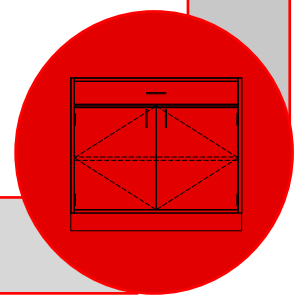


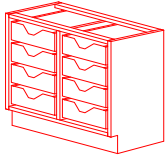
CUBICLE

MODEL	W	H	D
BC	36	25	13
	39	30	14
	42	34	18
	45	36	20
	48	42	24
			29

DOORS
25"-30" H
4 ADJUSTABLE SHELVES
6 COMPARTMENTS
34"-36"-42" H
9 ADJUSTABLE SHELVES
12 COMPARTMENTS

BASE CABINET HEIGHTS INCLUDE 1-3/16" COUNTER TOP

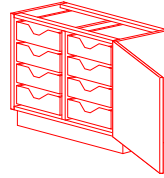




TOTE TRAYS

MODEL	W	H	D
BTO	24	25	18
	36	30	24
	48	34	
		36	
		42	

**TOTE TRAY CABINETS
AVAILABLE IN 8 / 12 / 16 / TOTE UNITS**



TOTE TRAYS

MODEL	W	H	D
BTD	24	25	18
	48	30	24
	36	34	
		36	
		42	

**DOORS
TOTE TRAY CABINETS
AVAILABLE IN 8 / 12 / 16 / TOTE UNITS**



2 DRAWERS

MODEL	W	H	D
DB	12	25	14
	15	30	18
	18		20
	21		24
	24		29

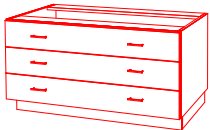
25" H 30" H
1 DRAWER 8³/₄" 1 DRAWER 11¹/₄"
1 DRAWER 10" 1 DRAWER 12¹/₂"



3 DRAWERS

MODEL	W	H	D
DB	12	25	14
	15	30	18
	18	34	20
	21	36	24
	24	42	29

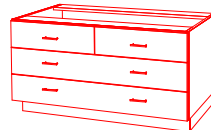
25" H 30" H
3 DRAWER 7" 2 DRAWER 7¹/₄"
 1 DRAWER 8³/₄"
34" H 36" H
2 DRAWER 8³/₄" 3 DRAWER 10"
1 DRAWER 10"
42" H
2 DRAWER 11¹/₄"
1 DRAWER 12¹/₂"



3 DRAWERS

MODEL	W	H	D
DB	27	42	25
	30	45	30
	33	48	34
	36		36
	39		42
			29

25" H 30" H
3 DRAWER 7" 2 DRAWER 7¹/₄"
 1 DRAWER 8³/₄"
34" H 36" H
2 DRAWER 8³/₄" 3 DRAWER 10"
1 DRAWER 10"
42" H
2 DRAWER 11¹/₄"
1 DRAWER 12¹/₂"

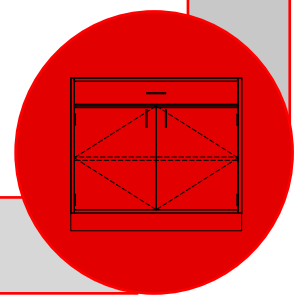


4 DRAWERS

MODEL	W	H	D
DB	27	42	25
	30	45	30
	33	48	34
	36		36
	39		42
			29

25" H 30" H
4 DRAWERS 7" 3 DRAWER 7¹/₄"
 1 DRAWER 8³/₄"
34" H 36" H
3 DRAWER 8³/₄" 4 DRAWER 10"
1 DRAWER 10"
42" H
3 DRAWER 11¹/₄"
1 DRAWER 12¹/₂"

BASE CABINET HEIGHTS INCLUDE 1-3/16" COUNTER TOP

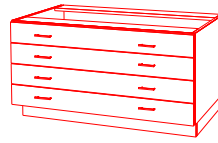




4 DRAWERS

MODEL	W	H	D
DB	12	25	14
	15	30	18
	18	34	20
	21	36	24
	24	42	29

25" H	30" H
1 DRAWER 3½"	1 DRAWER 4¾"
3 DRAWER 4¾"	3 DRAWER 7"
34" H	36" H
2 DRAWER 7"	4 DRAWER 8"
2 DRAWER 8"	
42" H	
4 DRAWER 8¾"	



4 DRAWERS

MODEL	W	H	D
DB	27	42	25
	30	45	30
	33	48	34
	36	36	24
	39	42	29

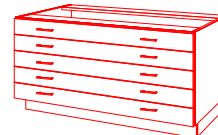
25" H	30" H
1 DRAWER 3½"	1 DRAWER 4¾"
3 DRAWER 4¾"	3 DRAWER 7"
34" H	36" H
2 DRAWER 7"	4 DRAWER 8"
2 DRAWER 8"	
42" H	
4 DRAWER 8¾"	



5 DRAWERS

MODEL	W	H	D
DB	12	25	14
	15	30	18
	18	34	20
	21	36	24
	24	42	29

25" H	30" H
5 DRAWER 3½"	1 DRAWER 3½"
	4 DRAWER 4¾"
34" H	36" H
3 DRAWER 4¾"	1 DRAWER 4¾"
2 DRAWER 7"	4 DRAWER 7"
42" H	
2 DRAWER 7"	
3 DRAWER 7¼"	

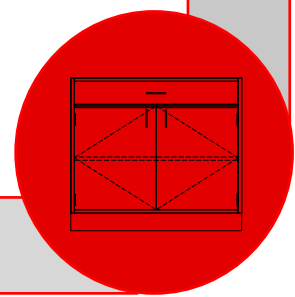


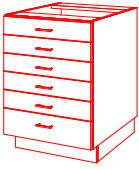
5 DRAWERS

MODEL	W	H	D
DB	27	42	25
	30	45	30
	33	48	34
	36	36	24
	39	42	29

25" H	30" H
5 DRAWER 3½"	1 DRAWER 3½"
	4 DRAWER 4¾"
34" H	36" H
3 DRAWER 4¾"	1 DRAWER 4¾"
2 DRAWER 7"	4 DRAWER 7"
42" H	
2 DRAWER 7"	
3 DRAWER 7¼"	

BASE CABINET HEIGHTS INCLUDE 1-3/16" COUNTER TOP

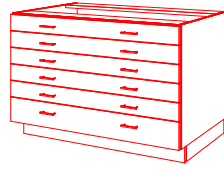




6 DRAWERS

MODEL	W	H	D
DB	12 24	30	20
	15	34	24
	18	36	29
	21	42	

30" H	34" H
5 DRAWER 3½"	2 DRAWER 3½"
1 DRAWER 4¾"	4 DRAWER 4¾"
36" H	42" H
6 DRAWER 4¾"	2 DRAWER 4¾"
	4 DRAWER 7"



6 DRAWERS

MODEL	W	H	D
DB	27 39	30	20
	30 42	34	24
	33 45	36	29
	36 48	42	

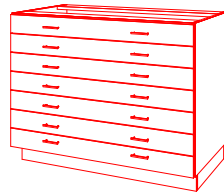
30" H	34" H
5 DRAWER 3½"	2 DRAWER 3½"
1 DRAWER 4¾"	4 DRAWER 4¾"
36" H	42" H
6 DRAWER 4¾"	2 DRAWER 4¾"
	4 DRAWER 7"



7 DRAWERS

MODEL	W	H	D
DB	12 24	34	20
	15	36	24
	18	42	29
	21		

34" H	36" H
6 DRAWER 3½"	4 DRAWER 3½"
1 DRAWER 4¾"	3 DRAWER 4¾"
42" H	
7 DRAWER 4¾"	

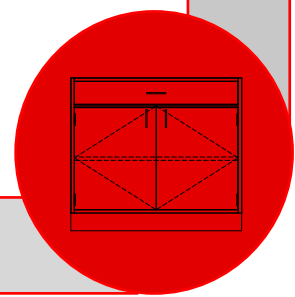


7 DRAWERS

MODEL	W	H	D
DB	27 39	34	20
	30 42	36	24
	33 45	42	29
	36 48		

34" H	36" H
6 DRAWER 3½"	4 DRAWER 3½"
1 DRAWER 4¾"	3 DRAWER 4¾"
42" H	
7 DRAWER 4¾"	

BASE CABINET HEIGHTS INCLUDE 1-3/16" COUNTER TOP

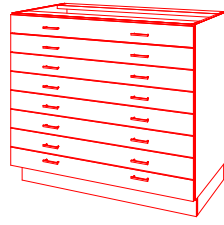




8 DRAWERS

MODEL	W	H	D	
DB	12	24	36	20
	15	42	24	
	18		29	
	21			

36" H	42" H
8 DRAWER 3½"	4 DRAWER 3½"
	4 DRAWER 4¾"



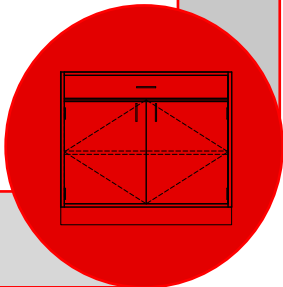
8 DRAWERS

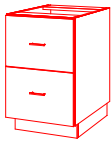
MODEL	W	H	D	
DB	27	39	36	20
	30	42	42	24
	33	45		29
	36	48		

36" H	42" H
8 DRAWER 3½"	4 DRAWER 3½"
	4 DRAWER 4¾"

CANT FIND IT HERE
CALL
(586)-758-4404

BASE CABINET HEIGHTS INCLUDE 1-3/16" COUNTER TOP

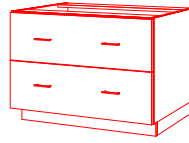




2 DRAWER FILE CABINET

MODEL	W	H	D
FB	16	30	24
	19		29

2 FILE DRAWER 11¼"
16W = LETTER
19W = LEGAL
FULL EXTENSION SLIDES



2 DRAWER LATERAL FILE

MODEL	W	H	D
LFB	30	30	24
	36		29

2 FILE DRAWER 11¼"
LETTER / LEGAL
FULL EXTENSION SLIDES



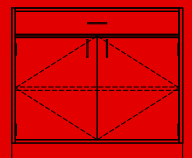
3 DRAWER FILE CABINET

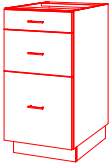
MODEL	W	H	D
FB	16	30	24
	19		29

1 DRAWER 4¾"
1 DRAWER 7"
1 FILE DRAWER 11¼"
16W = LETTER
19W = LEGAL
FULL EXTENSION SLIDES

CANT FIND IT HERE
CALL
(586)-758-4404

BASE CABINET HEIGHTS INCLUDE 1-3/16" COUNTER TOP





3 DRAWER FILE CABINET

MODEL	W	H	D
FB	16	34	24
	19	36	29

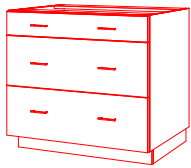
34H = 1 DRAWER 3½"
 36H = 1 DRAWER 7"
 2 FILE DRAWER 11¼"
 16W = LETTER
 19W = LEGAL
 FULL EXTENSION SLIDES



3 DRAWER FILE CABINET

MODEL	W	H	D
FB	16	42	24
	19		

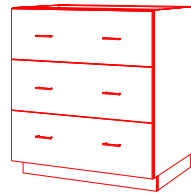
3 FILE DRAWER 11¼"
 16W = LETTER
 19W = LEGAL
 FULL EXTENSION SLIDES



3 DRAWER FILE CABINET

MODEL	W	H	D
LFB	30	34	24
	36	36	29

34H = 1 DRAWER 3½"
 36H = 1 DRAWER 7"
 2 FILE DRAWER 11¼"
 16W = LETTER
 19W = LEGAL
 FULL EXTENSION SLIDES



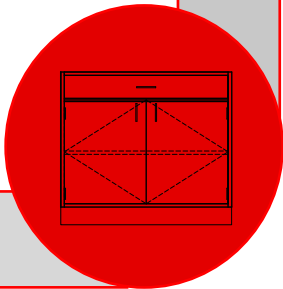
3 DRAWER FILE CABINET

MODEL	W	H	D
LFB	30	42	24
	36		

3 FILE DRAWER 11¼"
 16W = LETTER
 19W = LEGAL
 FULL EXTENSION SLIDES

CANT FIND IT HERE
 CALL
 (586)-758-4404

BASE CABINET HEIGHTS INCLUDE 1-3/16" COUNTER TOP

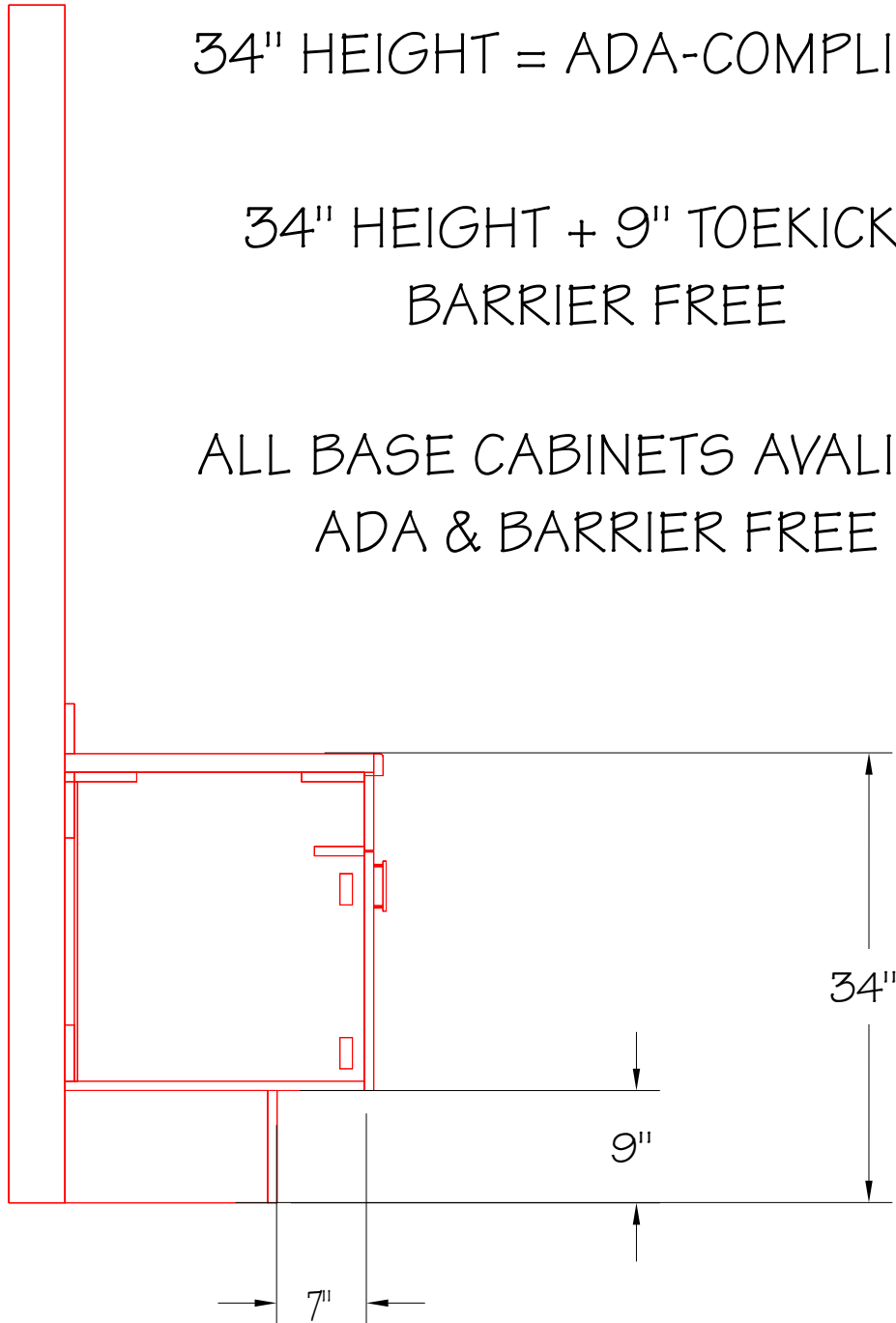


ADA & BARRIER FREE

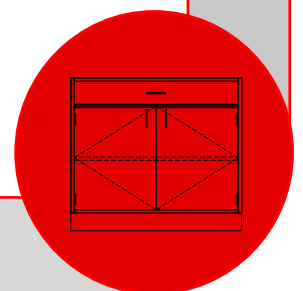
34" HEIGHT = ADA-COMPLIANT

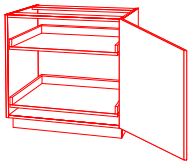
34" HEIGHT + 9" TOEKICK =
BARRIER FREE

ALL BASE CABINETS AVAILABLE
ADA & BARRIER FREE



BASE CABINET HEIGHTS INCLUDE 1-3/16" COUNTER TOP

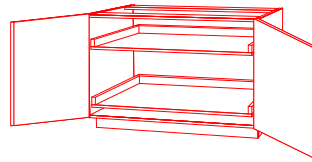




2 ROLL OUT

MODEL	W	H	D
BRO	12	30	18
	15	34	20
	18	36	24
	21	42	29
	24		

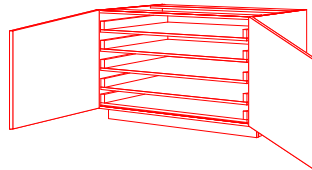
RIGHT OR LEFT DOOR
2 ROLL OUT DRAWERS



2 ROLL OUT

MODEL	W	H	D
BRO	27	42	30
	30	45	34
	33	48	36
	36	42	29
	39		

DOORS
2 ROLL OUT DRAWERS



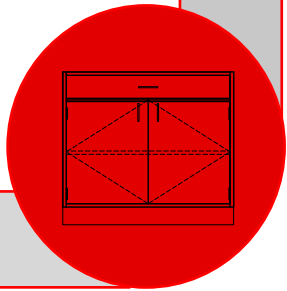
ROLL OUT

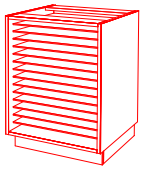
MODEL	W	H	D
BRO	27	42	30
	30	45	34
	33	48	36
	36	42	29
	39		

DOORS
30" H = 5 ROLL OUT DRAWERS
34" H = 6 ROLL OUT DRAWERS
36" H = 6 ROLL OUT DRAWERS
42" H = 7 ROLL OUT DRAWERS

CANT FIND IT HERE
CALL
(586)-758-4404

BASE CABINET HEIGHTS INCLUDE 1-3/16" COUNTER TOP

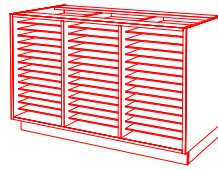




FOLIO

MODEL	W	H	D
BFO	12	30	14
	15	34	18
	18	36	20
	21	42	24
	24		29

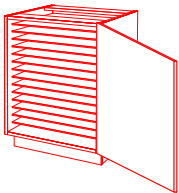
30" H = 10 SHELVES
 34" H = 12 SHELVES
 36" H = 14 SHELVES
 42" H = 16 SHELVES
 COMPARTMENT HEIGHT 1½"



FOLIO

MODEL	W	H	D
BFO	27	42	30
	30	45	34
	33	48	36
	36	42	24
	39		29

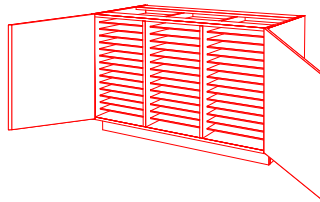
30" H = 30 SHELVES
 34" H = 36 SHELVES
 36" H = 42 SHELVES
 42" H = 48 SHELVES
 COMPARTMENT HEIGHT 1½"



FOLIO

MODEL	W	H	D
BFD	12	30	14
	15	34	18
	18	36	20
	21	42	24
	24		29

RIGHT OR LEFT DOOR
 30" H = 10 SHELVES
 34" H = 12 SHELVES
 36" H = 14 SHELVES
 42" H = 16 SHELVES
 COMPARTMENT HEIGHT 1½"



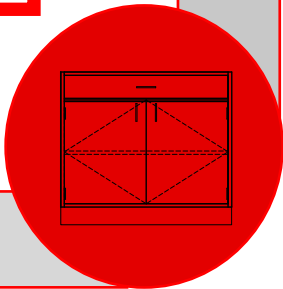
FOLIO

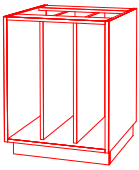
MODEL	W	H	D
BFD	27	42	30
	30	45	34
	33	48	36
	36	42	24
	39		29

DOORS
 30" H = 30 SHELVES
 34" H = 36 SHELVES
 36" H = 42 SHELVES
 42" H = 48 SHELVES
 COMPARTMENT HEIGHT 1½"

CANT FIND IT HERE
 CALL
 (586)-758-4404

BASE CABINET HEIGHTS INCLUDE 1-3/16" COUNTER TOP

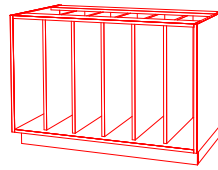




PROJECT

MODEL	W	H	D
BPO3	12	30	18
	15	34	20
	18	36	24
	21	42	
	24		

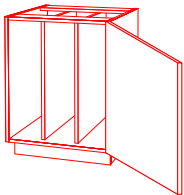
30" H = 23" H COMPARTMENTS
 34" H = 27" H COMPARTMENTS
 36" H = 30" H COMPARTMENTS
 42" H = 34½" H COMPARTMENTS



PROJECT

MODEL	W	H	D
BPO6	27	42	30
	30	45	34
	33	48	36
	36	42	
	39		

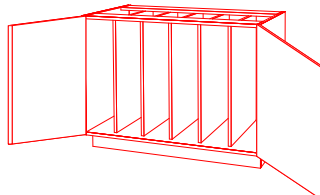
30" H = 23" H COMPARTMENTS
 34" H = 27" H COMPARTMENTS
 36" H = 30" H COMPARTMENTS
 42" H = 34½" H COMPARTMENTS



PROJECT

MODEL	W	H	D
BPD3	12	30	18
	15	34	20
	18	36	24
	21	42	
	24		

RIGHT OR LEFT DOOR
 30" H = 23" H COMPARTMENTS
 34" H = 27" H COMPARTMENTS
 36" H = 30" H COMPARTMENTS
 42" H = 34½" H COMPARTMENTS



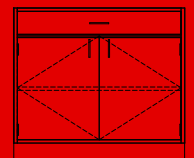
PROJECT

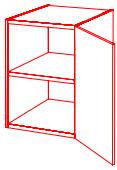
MODEL	W	H	D
BPD6	27	42	30
	30	45	34
	33	48	36
	36	42	
	39		

DOORS
 30" H = 23" H COMPARTMENTS
 34" H = 27" H COMPARTMENTS
 36" H = 30" H COMPARTMENTS
 42" H = 34½" H COMPARTMENTS

CANT FIND IT HERE
 CALL
 (586)-758-4404

BASE CABINET HEIGHTS INCLUDE 1-3/16" COUNTER TOP

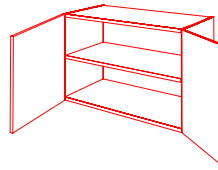




STORAGE

MODEL	W	H	D
W	12	18	13
	15	25	14
	18	30	18
	21	36	
	24	42	
	27	48	

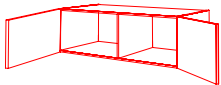
RIGHT OR LEFT HAND DOOR



STORAGE

MODEL	W	H	D
W	30	18	13
	33	25	14
	36	30	18
	39	36	
		42	
		48	

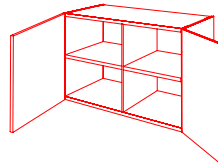
DOORS
ADJUSTABLE SHELF



STORAGE

MODEL	W	H	D
W	42	18	13
	45		14
	48		18

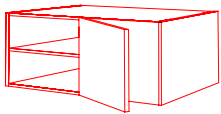
DOORS
CENTER DIVIDER



STORAGE

MODEL	W	H	D
W	42	25	13
	45	30	14
	48	36	18
		42	
		48	

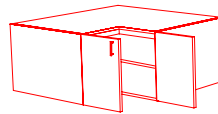
DOORS
2 ADJUSTABLE SHELVES



BLIND CORNER

MODEL	W	H	D
WBC	36	18	13
		25	14
		30	18
		36	
		42	
		48	

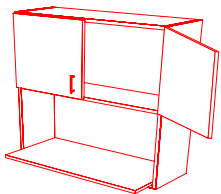
RIGHT OR LEFT HAND DOOR



"L" SHAPER CORNER

MODEL	W	H	D
WLC	24	18	13
	27	25	14
	30	30	18
	33	36	
	36	42	
		48	

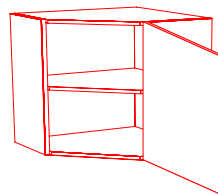
DOORS
ADJUSTABLE SHELF



MICROWAVE

MODEL	W	H	D
WM	24	42	30
	27	45	36
	30	48	42
	33		
	36		
	39		

DOORS
MICROWAVE SHELF

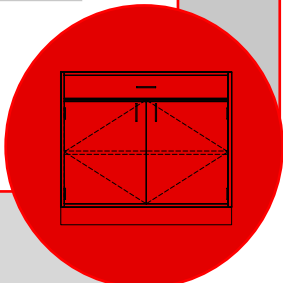


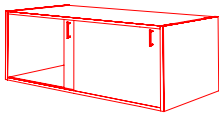
DIAGONAL CORNER

MODEL	W	H	D
WDC	24	18	13
		25	14
		30	18
		36	
		42	
		48	

DOOR
ADJUSTABLE SHELF

18" H = NO SHELVES
25" H = 1 SHELF
30" - 36" H = 2 SHELVES
42" - 48" H = 3 SHELVES

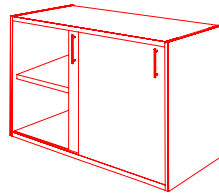




STORAGE

MODEL	W	H	D
WSD	24	18	13
	27		14
	30		18
	33		
	36		
	39		

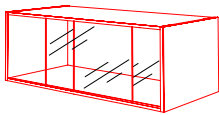
SLIDING DOORS



STORAGE

MODEL	W	H	D
WSD	24	25	13
	27	30	14
	30	36	18
	33	42	
	36	48	
	39		

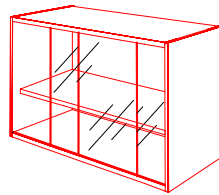
SLIDING DOORS
ADJUSTABLE SHELF



DISPLAY

MODEL	W	H	D
WD	24	18	13
	27		14
	30		18
	33		
	36		
	39		

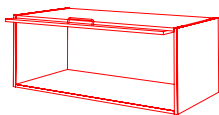
SLIDING GLASS DOORS



DISPLAY

MODEL	W	H	D
WD	24	25	13
	27	30	14
	30	36	18
	33	42	
	36	48	
	39		

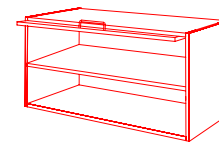
ADJUSTABLE SHELF
SLIDING GLASS DOORS



FLIPPER DOOR

MODEL	W	H	D
WFD	24	18	18
	27		
	30		
	33		
	36		

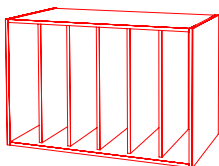
FLIPPER DOOR



FLIPPER DOOR

MODEL	W	H	D
WFD	24	25	18
	27		
	30		
	33		
	36		

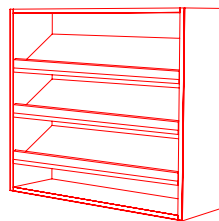
FLIPPER DOOR



PROJECT

MODEL	W	H	D
WPO	24	42	18
	27	45	25
	30	48	30
	33	36	
	36	42	
	39	48	

VERTICAL DIVIDERS
CUSTOMIZE ABLE DIVIDERS

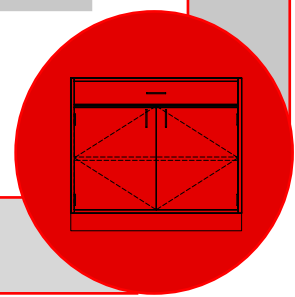


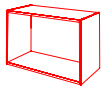
MAGAZINE DISPLAY

MODEL	W	H	D
WMD	24	42	36
	27	45	42
	30	48	48
	33		
	36		
	39		

3 ADJUSTABLE MAGAZINE
SHELVES

18" H = NO SHELVES
25" H = 1 SHELF
30" - 36" H = 2 SHELVES
42" - 48" H = 3 SHELVES

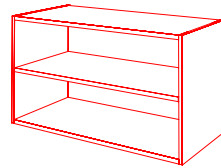




STORAGE

MODEL	W	H	D
WO	12	18	13
	15		14
	18		18
	21		
	24		
	27		

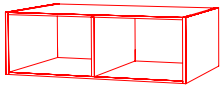
ADJUSTABLE SHELF



STORAGE

MODEL	W	H	D
WO	30	25	13
	33	30	14
	36	36	18
	39	42	
		48	

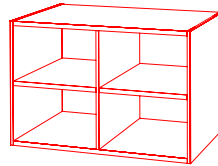
ADJUSTABLE SHELF



STORAGE

MODEL	W	H	D
WO	42	18	13
	45		14
	48		18

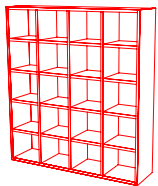
CENTER DIVIDER



STORAGE

MODEL	W	H	D
WO	42	25	13
	45	30	14
	48	36	18
		42	
		48	

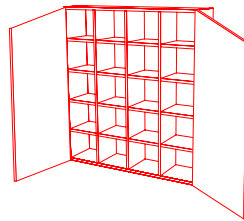
2 ADJUSTABLE SHELVES
CENTER DIVIDER



CUBICLE / MAIL CUBICLE

MODEL	W	H	D
WCU	24	42	18
	27	45	25
	30	48	30
	33	36	
	36	42	
	39	48	

CUSTOMIZE ABLE CUBICLES
AVAILABLE AS PASS THRU



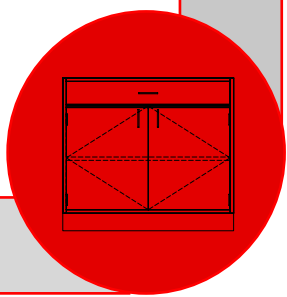
CUBICLE / MAIL CUBICLE

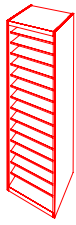
MODEL	W	H	D
WCU	24	42	18
	27	45	25
	30	48	30
	33	36	
	36	42	
	39	48	

DOORS
CUSTOMIZE ABLE CUBICLES

18" H = NO SHELF
25" H = 1 SHELF
30" - 36" H = 2 SHELVES
42" - 48" H = 3 SHELVES

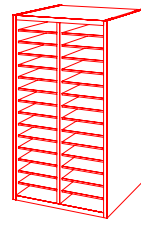
CANT FIND IT HERE
CALL
(586)-758-4404





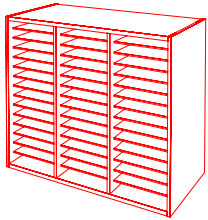
FOLIO

MODEL	W	H	D
WF	12	25	13
	18	30	14
		36	18
		42	



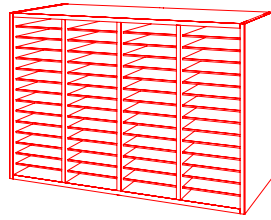
FOLIO

MODEL	W	H	D
WF	24	25	13
	27	30	14
		36	18
		42	



FOLIO

MODEL	W	H	D
WF	30	25	13
	33	30	14
	36	36	18
		42	

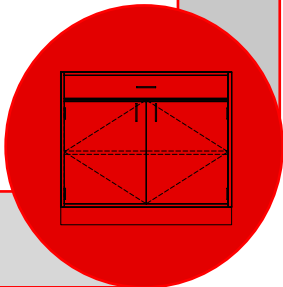


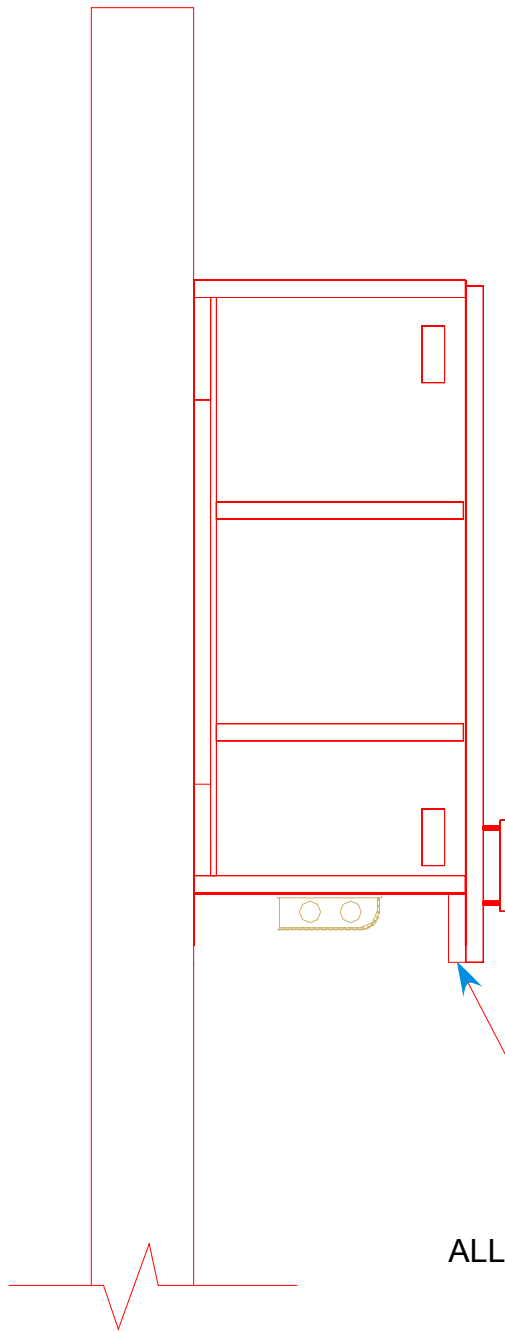
FOLIO

MODEL	W	H	D
WF	39	25	13
	42	30	14
	45	36	18
		42	
		48	



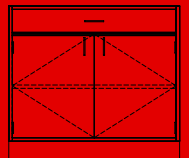
25" H = 27 SHELVES
 30" H = 30 SHELVES
 34" H = 36 SHELVES
 36" H = 42 SHELVES
 42" H = 48 SHELVES
 COMPARTMENT HEIGHT 1½"

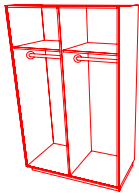




ALL WALL CABINETS AVAILABLE
WITH
INTEGRATED VALANCE

CANT FIND IT HERE
CALL
(586)-758-4404

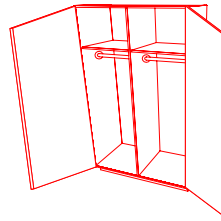




WARDROBE

MODEL	W	H	D
WRO	39	59	20
	42	72	24
	45	84	
	48		

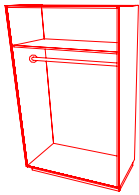
CENTER DIVIDER
2 HANGER BARS & SHELVES



WARDROBE

MODEL	W	H	D
WRD	39	59	13
	42	72	14
	45	84	18
	48		

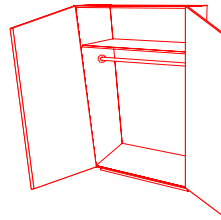
DOORS
CENTER DIVIDER
2 HANGER BARS & SHELVES



WARDROBE

MODEL	W	H	D
WRO	24	59	20
	27	72	24
	30	84	
	33		
	36		

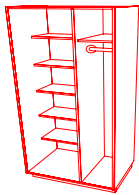
HANGER BAR & SHELF



WARDROBE

MODEL	W	H	D
WRD	24	59	20
	27	72	24
	30	84	
	33		
	36		

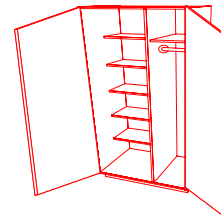
DOORS
HANGER BAR & SHELF



WARDROBE

MODEL	W	H	D
WR50	30	42	59
	33	45	72
	36	48	84
	39		

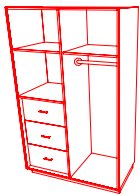
HANGER BAR & SHELF
CENTER DIVIDER
5 ADJUSTABLE SHELVES



WARDROBE

MODEL	W	H	D
WR5D	30	42	59
	33	45	72
	36	48	84
	39		

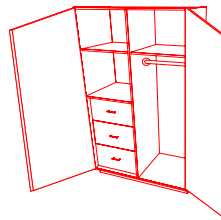
DOORS
HANGER BAR & SHELF
CENTER DIVIDER
5 ADJUSTABLE SHELVES



WARDROBE

MODEL	W	H	D
WRFO	30	42	59
	33	45	72
	36	48	84
	39		

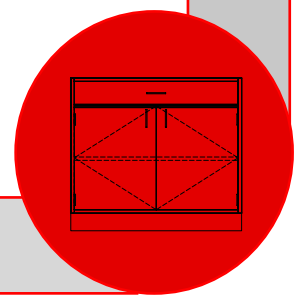
HANGER BAR & SHELF
CENTER DIVIDER
ADJUSTABLE SHELF
3 FILE DRAWERS

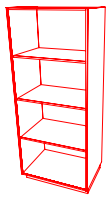


WARDROBE

MODEL	W	H	D
WRFD	30	42	59
	33	45	72
	36	48	84
	39		

DOORS
HANGER BAR & SHELF
CENTER DIVIDER
ADJUSTABLE SHELF
3 FILE DRAWERS

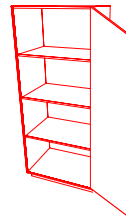




TALL STORAGE

MODEL	W	H	D
TSO	12	59	13
	15	72	14
	18	84	18
	21		20
	24		24
			29

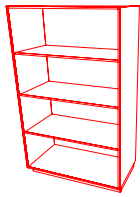
3 ADJUSTABLE SHELVES



TALL STORAGE

MODEL	W	H	D
TSD	12	59	13
	15	72	14
	18	84	18
	21		20
	24		24
			29

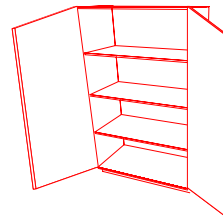
RIGHT OR LEFT HAND DOOR
3 ADJUSTABLE SHELVES



TALL STORAGE

MODEL	W	H	D
TSO	27	59	13
	30	72	14
	33	84	18
	36		20
			24
			29

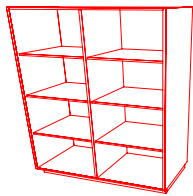
3 ADJUSTABLE SHELVES



TALL STORAGE

MODEL	W	H	D
TSD	27	59	13
	30	72	14
	33	84	18
	36		20
			24
			29

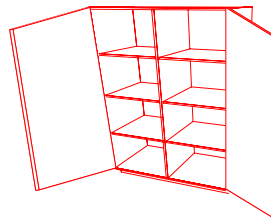
DOORS
3 ADJUSTABLE SHELVES



TALL STORAGE

MODEL	W	H	D
TSO	39	59	13
	42	72	14
	45	84	18
	48		20
			24
			29

CENTER DIVIDER
6 ADJUSTABLE SHELVES



TALL STORAGE

MODEL	W	H	D
TSD	39	59	13
	42	72	14
	45	84	18
	48		20
			24
			29

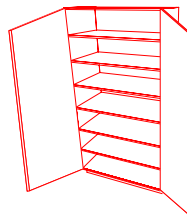
DOORS
CENTER DIVIDER
6 ADJUSTABLE SHELVES



TALL BOOK CASE

MODEL	W	H	D
TBO	36	52	12
		72	18
		84	

6 ADJUSTABLE SHELVES



TALL BOOK CASE

MODEL	W	H	D
TBD	36	52	12
		72	18
		84	

DOORS
6 ADJUSTABLE SHELVES

